








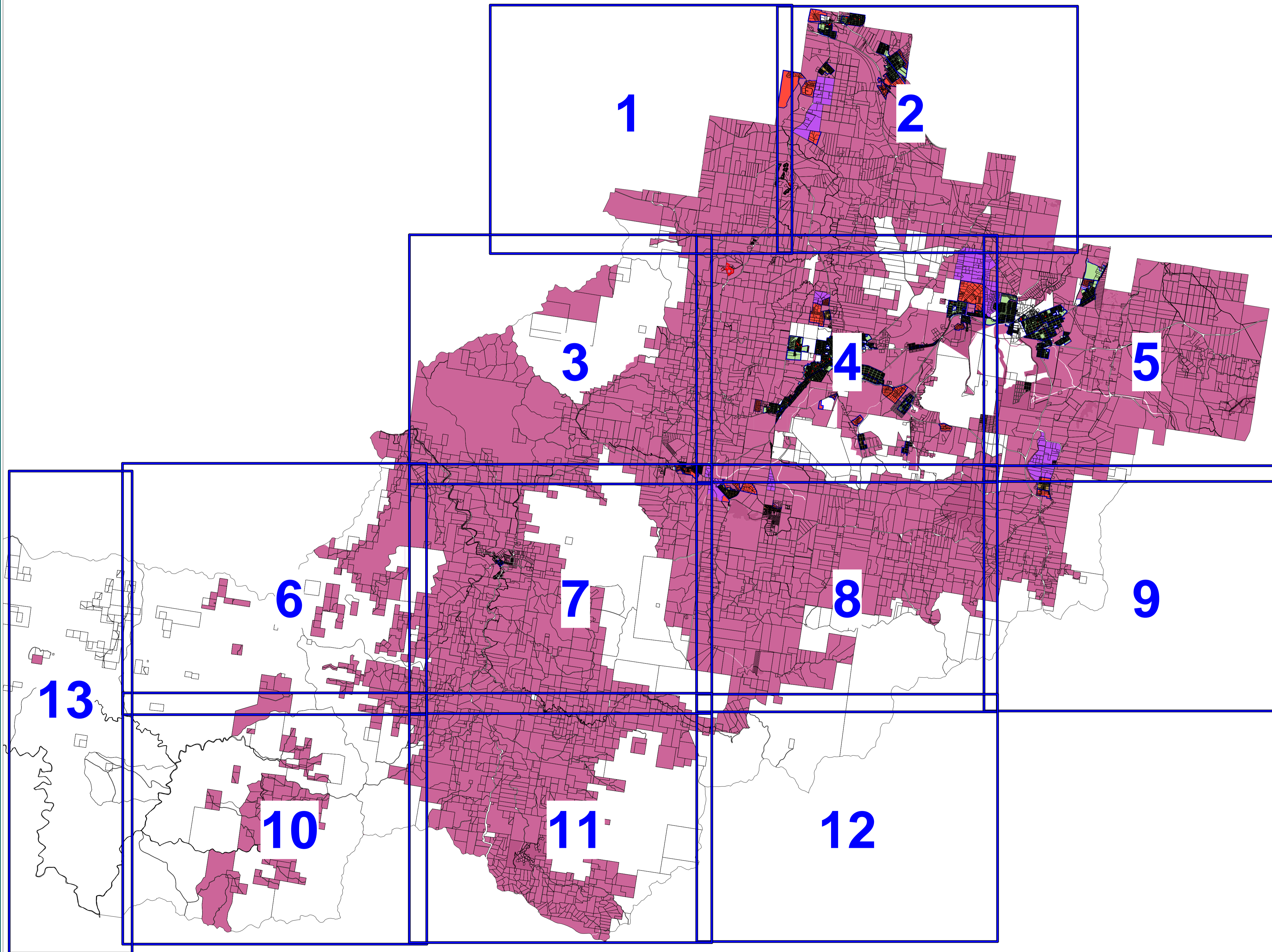


Minimum Lot Size Legend

	450 square metres
	750 square metres
	1500 square metres
	2000 square metres
	10,000 square metres
	4 Hectares
	40 Hectares
	80 Hectares
	Areas Referred To Clause 19 (Minimum Subdivision Lot Size)



Map Index

Date Produced :
August 24, 2007

Designed By :
Cessnock City Council

Scale :
1 : 120,000

Reference :
Bo Moshage Min Lot Size Map Index240807

Coordinate System :
Map Grid of Australia (MGA)
Datum 94
Zone 56.



Contact :
PO Box 152,
68-72 Vincent St,
CESSNOCK 2325.
Ph. +61 (02) 4993 4100
Fax +61 (02) 4993 4200

This map has been proudly produced by the GIS section of Cessnock City Council.

DISCLAIMER:
This map has been produced to assist individuals in determining land details within the City of Cessnock and the information contained in it is made in good faith but on the basis that Council or its Staff are not liable (whether by reason of negligence, lack of care or otherwise) to any person for any damage or loss whatsoever which has occurred or may occur in relation to that person taking or not taking (as the case may be) action in respect of any representation, statement or advice referred to above.
Copyright : Cessnock City Council (2007)
Land & Property Information (2007)